



# Ni Ti Mountain Wind Project

The Ni Ti Mountain Wind Project is an Indigenous community-led initiative on Yinka Dene territory, near Fraser Lake, BC. Majority-owned by the Stellat'en First Nation and Nadleh Whut'en collectively and developed in partnership with Innergex, the project will generate clean, renewable electricity while bringing long-term benefits and opportunities to the community.

Over the next 30 years, the project will deliver clean energy, share revenues with the Stellat'en and Nadleh Whut'en communities, and contribute to local taxes. It will create jobs and business opportunities for local and Indigenous partners. Built with Indigenous leadership and care for the environment, Ni Ti Mountain will strengthen the community, advances reconciliation, and shows how clean energy and social well-being go hand in hand.

Ni Ti Mountain was selected by BC Hydro to supply clean, renewable energy under its 2024 Call for Power and is expected to reach full commissioning in 2029.



A  
Stellat'en and  
Nadleh Whut'en  
First Nations-led  
wind project on  
Yinka Dene  
territory



## Project In Brief



### Status

In Development



### Capacity

Up to 200 MW of clean energy, supplying BC for 30 years.



### Ownership (%)

+ 51% Stelat'en First Nation and Nadleh Whut'en  
+ 49% Innergex



### Location

on Yinka Dene territory,  
~14 km south of Fraser Lake



### Wind Turbines

Approximately 35 turbines  
Each ~ 5.5 MW



### Transmission Line to BC Hydro Substation

~24 km 230 kV transmission line to Glenannan Substation



### Will produce enough electricity to power

~ 35,000 homes/year



### Client

BC Hydro, 30-year PPA  
2024 Call for Power



### Expected Commissioning

2029



### Revenue Sharing

30 years of revenue sharing with project partners



### Minimizes land disturbance

Uses previously disturbed areas and roads, and wildfire affected areas to minimize new landscape disturbances. Route the transmission line along existing linear disturbances. Avoids and/or minimizes impacts to high-value wildlife habitats (e.g. biodiversity / immediate measures areas, wetlands, etc.).

## About the project partners

### Stelat'en First Nation

Stelat'en First Nation, located between Fraser Lake and Vanderhoof, has a long history of forward thinking and human centered decision making, and are committed to supporting their entrepreneurs, labourers, working professionals, and students to strengthen their members' financial independence and business acumen.

### Nadleh Whut'en

Nadleh Whut'en are the "people who live where the salmon return" and are a proud community of Dakelh peoples (also known as Carrier). Nadleh Whut'en have lived on their traditional territory since time immemorial and are a part of the larger Yinka Dene (Carrier) Nation.

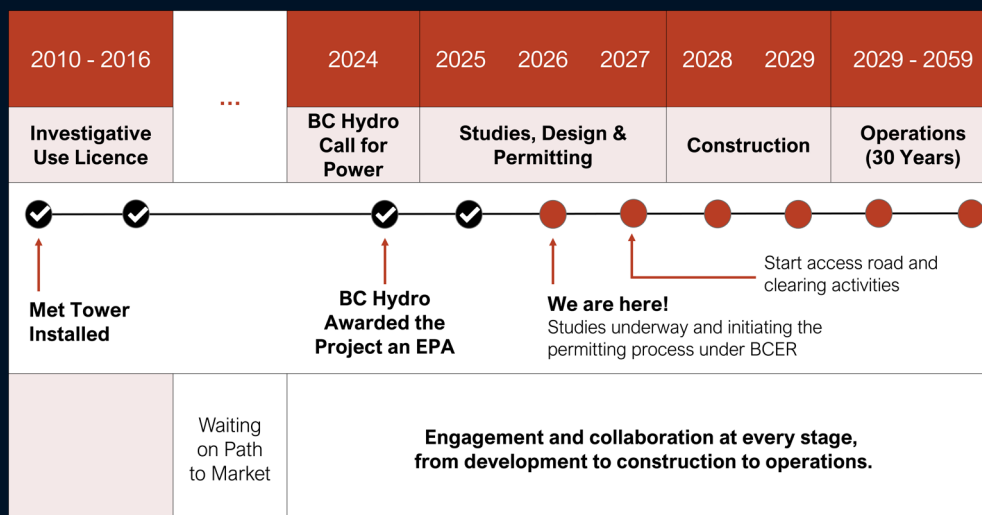
### Innergex

Founded in 1990, Innergex develops, constructs, acquires, owns and operates hydroelectric, wind, solar and energy storage facilities that we own for the long term. We pride ourselves in being a good community partner and neighbour.

## Project Timeline

Ni Ti Power takes great pride in nurturing long-term relationships with the communities associated with the Project. Beginning with pre-development community engagement and continuing throughout construction and operations, we take time to learn about a community's needs and strive to arrive at a design that best reflects community feedback, values, and knowledge combined with the technical studies being completed for the project. We believe in building durable relationships through open dialogue and an adaptive approach to project design. As the studies are completed, the results can be found at [www.nitimountainwind.com](http://www.nitimountainwind.com).

Responsible development also means planning for the long term. At the end of the project's lifecycle, infrastructure will be carefully decommissioned and the land restored, leaving a positive legacy for both the environment and the communities around it.



# The Road to the North

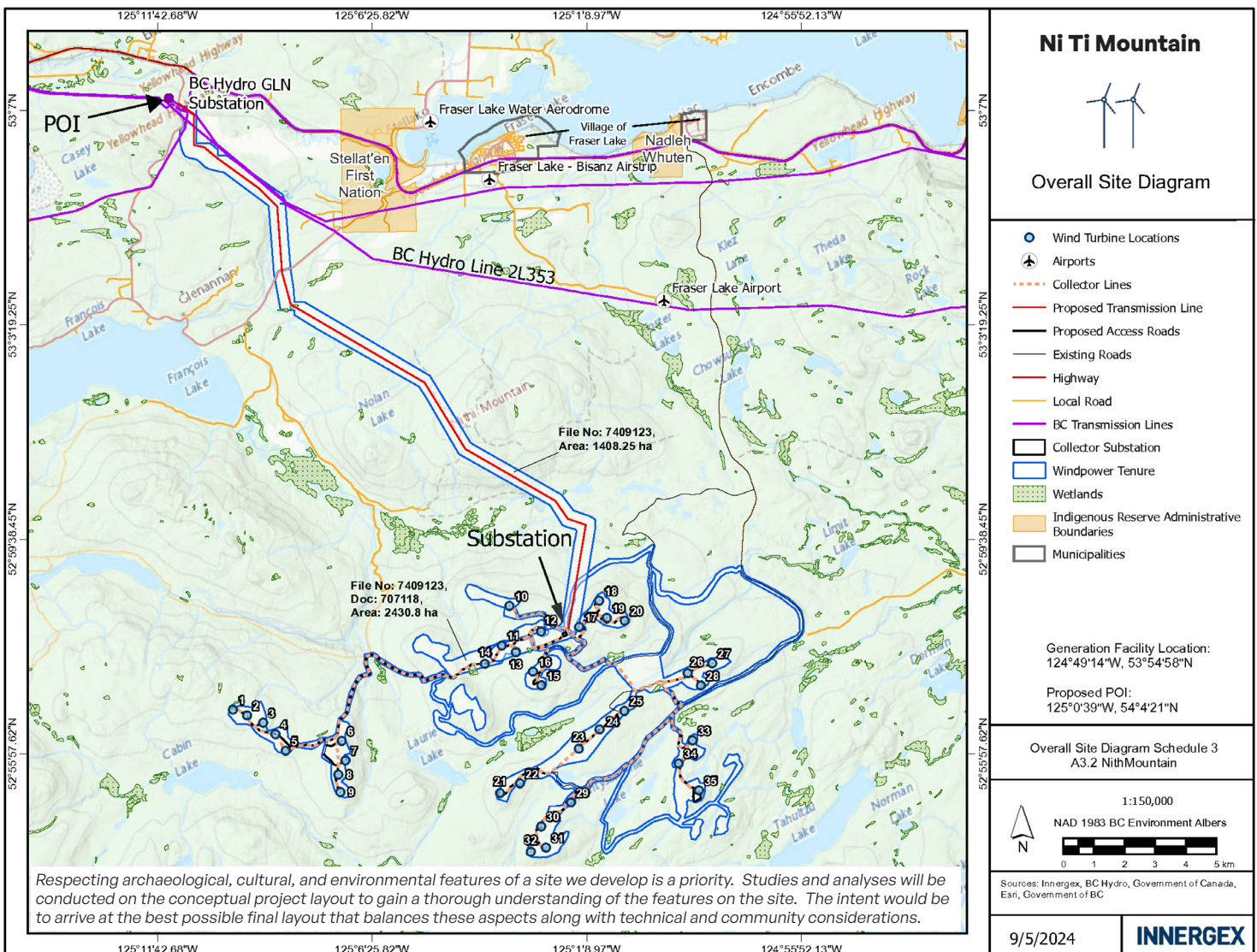
Did you know that the name “Ni Ti” means “Road to the North” in the Dakelh language? The project logo tells a similar story: it was created through a community contest and inspired by pictographs found in the Fraser Lake area. The logo proudly includes the words Ni Ti in Dakelh syllabics, grounding the project in local culture and history.



## Project Benefits

The project delivers long-term environmental, economic, and community benefits for B.C. and local partners:

- 200 MW of clean wind energy supplying BC for at least 30 years and supporting provincial climate goals
- 30 years of revenue sharing with project partners
- Ongoing tax payments to the Regional District of Bulkley-Nechako
- Up to 250 jobs during peak construction
- 5–10 long-term Operations & Maintenance roles
- Opportunities for local and Indigenous businesses throughout construction and operations
- Regional economic growth through local sourcing and sustained investment
- Habitat restoration initiatives, including contributions to the Endako Chinook Enhancement Program and moose habitat enhancement
- Indigenous leadership and partnership embedded across development, construction, and operations
- Strengthening long-term community well-being and resilience



## How Wind Energy Works

A typical wind energy project uses multiple turbines to turn wind into electricity.

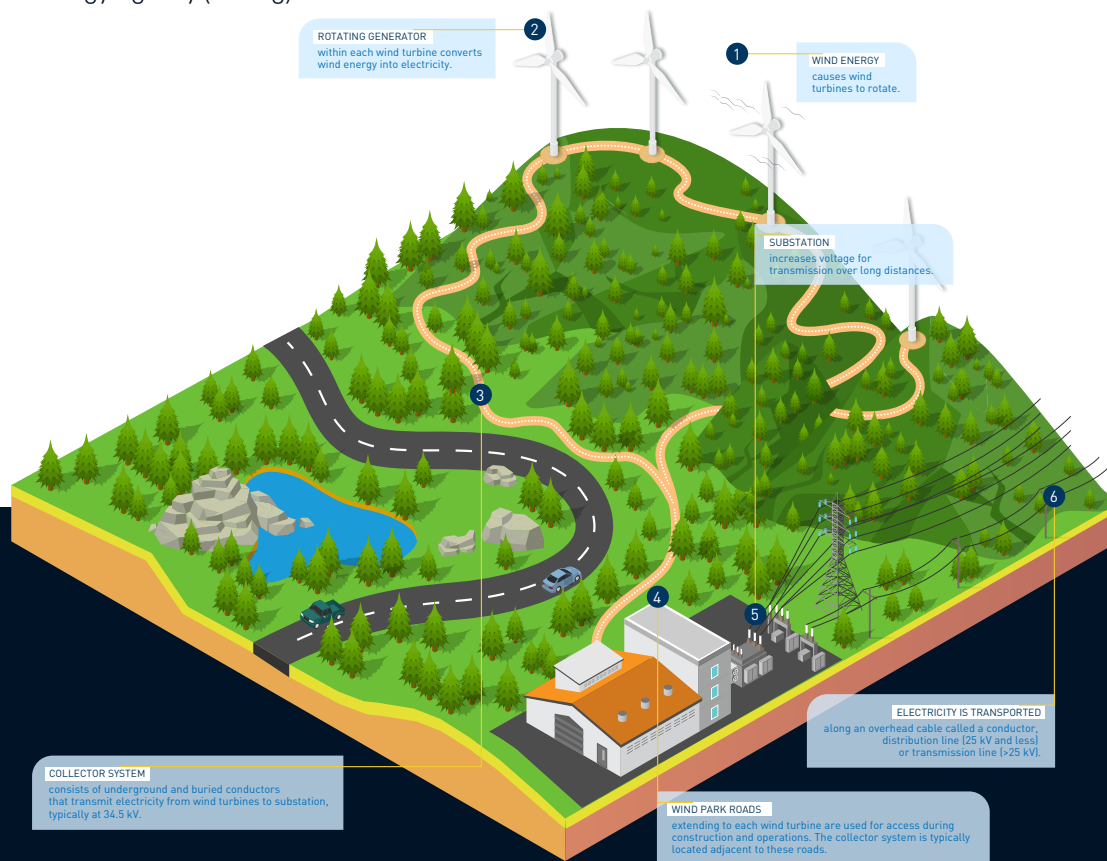
- **Turbine basics:** Each tower has a rotor with blades connected to a generator inside the nacelle.
- **Generating electricity:** Wind turns the blades, activating a gearbox that powers the generator.
- **Delivery to the grid:** Electricity goes to a step-up station before reaching consumers.
- **Energy output:** depends on wind speed, air density, and blade size.

More information on wind energy is available from

- Innergex ([innergex.com](http://innergex.com))
- Canadian Renewable Energy Association ([renewablesassociation.ca/wind-energy](http://renewablesassociation.ca/wind-energy))
- International Energy Agency ([iea.org](http://iea.org))

## Energy That's Clean and Safe

- Wind turbines produce no emissions or harmful waste.
- Proper decommissioning recycles over 80% of materials.
- Turbine blades are harder to recycle, but new solutions are being developed.
- Noise is kept below 40 dB – about the hum in a library.
- No water is required to generate electricity.
- Turbines are carefully sited to protect birds, bats, and sensitive species.
- Decades of global operation have shown that wind turbines are safe for people and wildlife.



**For more information,  
please contact:**

**Virginia Rodriguez**

Specialist - Community and Government Relations  
Innergex

[VRodriguez@innergex.com](mailto:VRodriguez@innergex.com) or 778-554-1652

[niti\\_mountain@innergex.com](mailto:niti_mountain@innergex.com)  
[www.nitimountainwind.com](http://www.nitimountainwind.com)



**NiTi  
POWER**